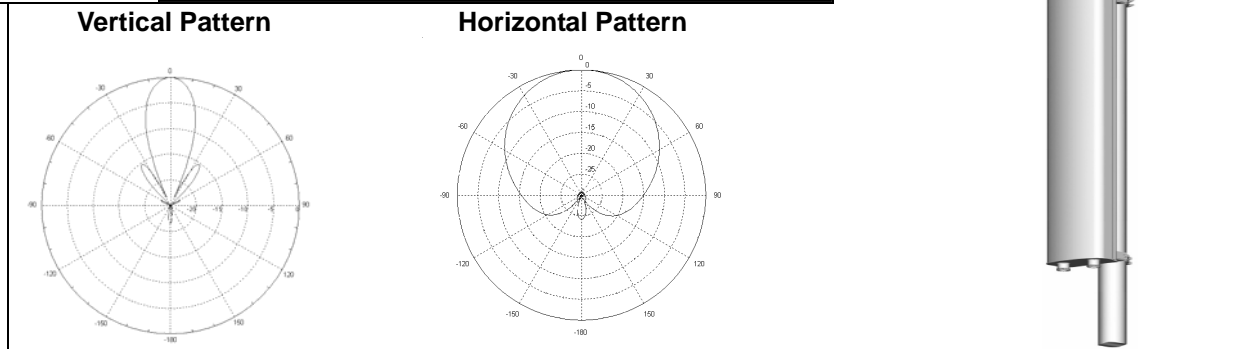


BAP Panel Antenna Series - Slant Pol.



Electrical Parameters	BAP400-65S-12D
Frequency range	380~470MHz
Gain	11.7dBi
Polarization	Dual, slant $\pm 45^\circ$
Vertical plane -3dB beamwidth	32°
Horizontal plane -3dB beamwidth	65°
Return loss	>14dB
Front to back ratio	>20dB
Max CW power per port	400W
Impedance	50Ω
IMD performance	≤-150dBc
Fixed electrical downtilt	0°
Lighting protection	DC ground
Connector type	DIN 7/16F
Mechanical Parameters	Specification
Rated wind speed	200km/hr
Lateral thrust at the rated wind	Front:1261N/128.69Kg; Rear:1118N/114.08Kg; Side:573N/46.77Kg
Dimensions H x W x D	1020 x 415 x 140mm
Packed size H x W x D	1200x 520 x 330mm
Net weight (with mounting hardware)	12kg
Operating temperature	Min -40°C Max +60 °C
Radome material	FRP (Waterproof)
Mechanical downtilt max. (with adjustable brackets)	20°
Mounting pole (min/max diameter)	50~100mm
Performance	Specification
Materials:	All internal parts corrosion resistant. All antenna fasteners stainless steel. Bracket assemblies fully galvanized. Radome surface treated for maximum UV protection.
Mounting:	Available with either fixed brackets (non-adjustable) or mechanically adjustable bracket assemblies. Please specify when ordering.
Grounding:	Lower bracket assembly DC ground.

Eyecom company policy is one of continuing improvement; therefore we reserve the right to change this specification without notice.